

Educator Quality Vision

FLDOE puts Florida students first by focusing on the development, mentoring, and retention of highly qualified teachers and administrators to serve as facilitators of learning.

The PPS Toolkit



Professional Practices Services

State-level office responsible for:

- Investigating and prosecuting misconduct by certified educators
- Reviewing criminal history and backgrounds of applicants seeking a Florida Educator Certificate
- Monitoring compliance to disciplinary orders
- Filing Notices of Violation against educators who fail to comply with disciplinary orders

Professional Practices Services does not...

- Issue disciplinary orders
- Investigate non-certified persons
- Investigate allegations outside of guidelines defined by statute or rule or that are determined to be legally insufficient

Mandated Reporters

S. 1012.796, F.S.

- Florida public school districts
- Florida public schools
- Florida charter schools
- Governing Boards of Florida charter schools
- Florida private schools that accept scholarships

Mandated Reporters

- What to report



- When to report



SHALL...



File in writing with DOE



Legally Sufficient allegations



Within 30 days of knowledge



Develop and adopt policy &
procedure for reporting

...Provide all documents

- Interviews
- Class Roster
- Photographs & Videos
- Communications
- IEP Documents
- Disciplinary Action
- Renewal Applications



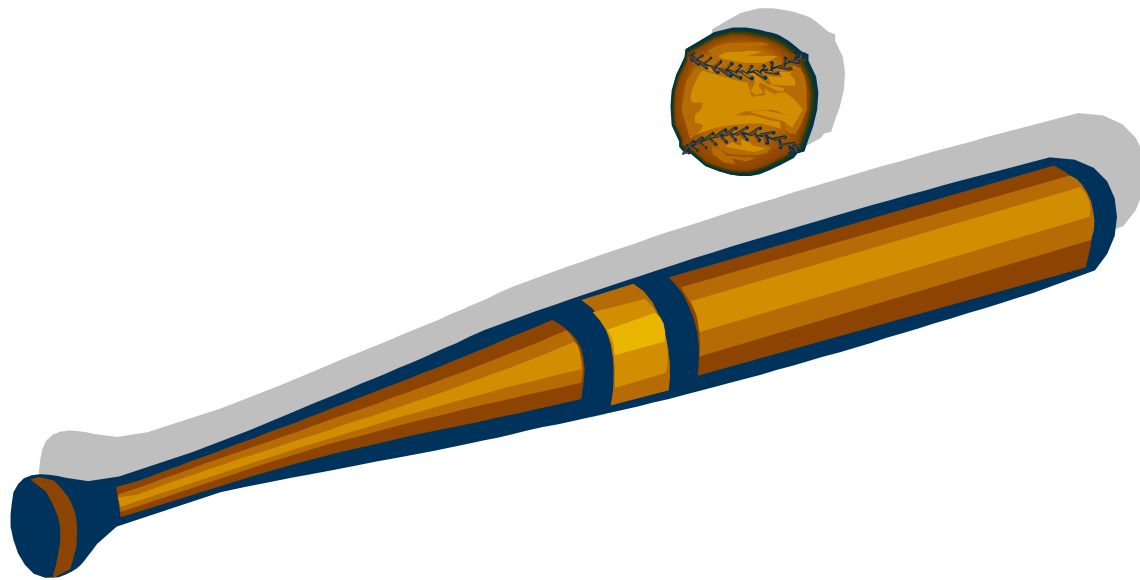
...Adopt Policy and Procedure



School Board Policy must include:

- ❖ Standards for screening, hiring and terminating
- ❖ Standards of Ethical Conduct
- ❖ Duty to uphold standards
- ❖ Detailed procedures for instructional personnel & school administrators to report allegations related to health, safety & welfare
- ❖ Requirement to re-assign instructional personnel and school administrators pending investigation
- ❖ Penalties for failing to comply
 - ❖ Instructional Personnel and School Administrators
 - ❖ Superintendent
 - ❖ All Personnel
- ❖ Procedures for informing the Superintendent

Employee Discipline



6A-5.056 Florida Administrative Code Criteria for Suspension and Dismissal

- Immorality
- Misconduct in Office
- Incompetency: Inefficiency & Incapacity
- Willful neglect of duty
- Drunkenness
- Multiple annual performance ratings of unsatisfactory or needs improvement
- Crimes of moral turpitude

One of these things is
not like the other....



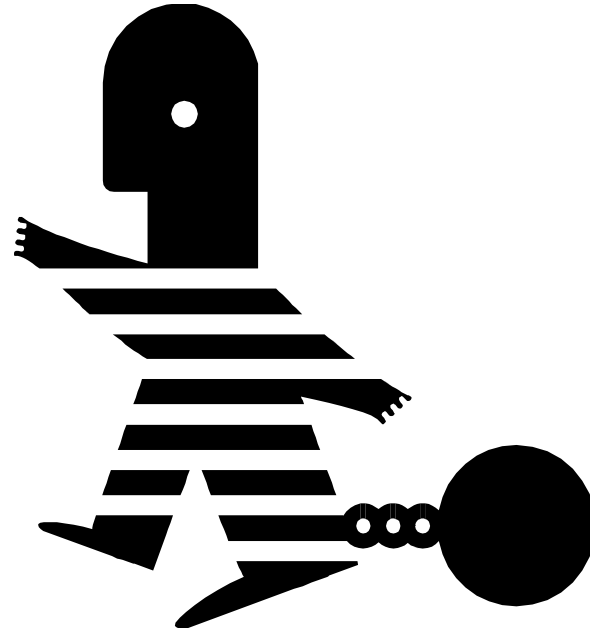
DISQUALIFYING OFFENSES



Disqualifying Offenses s.1012.315,F.S.

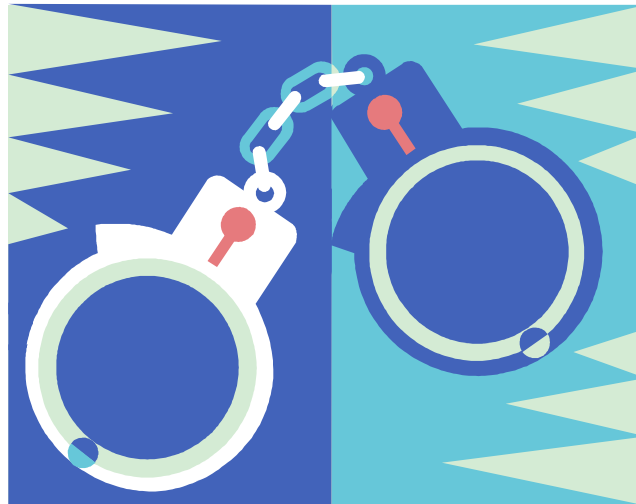
- District Court of Appeals: Presmy & Faublas
- For **certificate holders**, if they were convicted of a DQ crime prior to July 1, 2008, the DQ law would not apply.
- For **certificate holders** convicted of a DQ crime after July 1, 2008, the DQ law would apply.
- An **applicant** is disqualified from employment or certification if convicted of an offense listed in 1012.315, F.S., regardless of the date of conviction.

Background Screening: Certified Educators



Subsequent Arrest Notifications

- Notify PPS upon notice of arrest
- Provide PPS follow-up documents
- Provide PPS self reporting information
- Provide PPS renewal applications



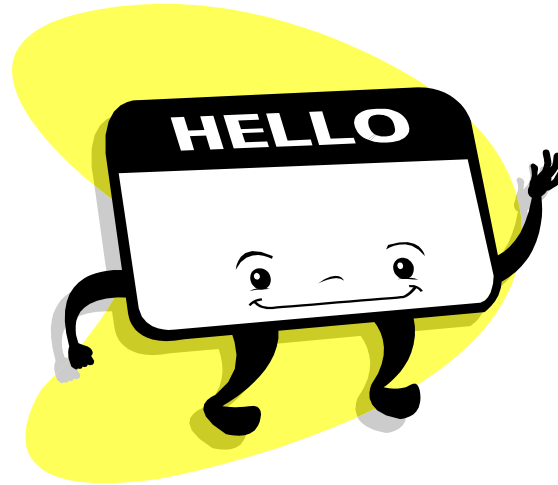
Fingerprinting Process

- Name (first, middle, last, suffix)
- SS # are required
- DOB matches BEC records
- ORI = 1Z DOE/Teacher Certification



Background Screening: Contractors & Vendors

- ORI = 2Z
- FSSRS
- Exceptions
- Badges
- Retention





Volunteer Screening

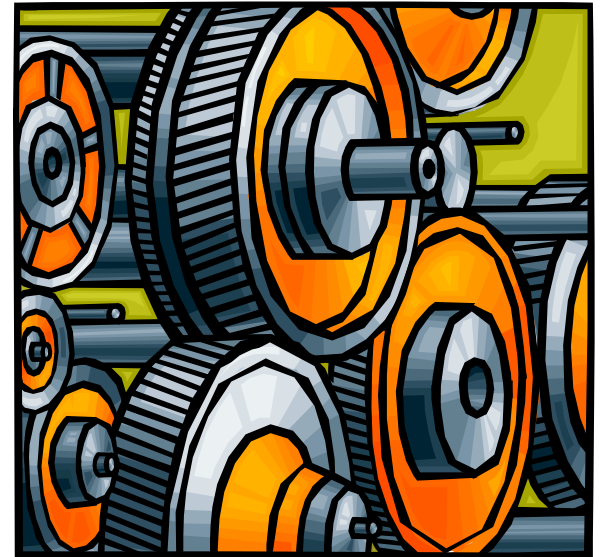
S. 943.04351, Florida Statutes

Search of registration information regarding sexual predators and sexual offenders required prior to appointment or employment.

—A state agency or governmental subdivision, prior to making any decision to appoint or employ a person to work, whether for compensation or as a **volunteer, at any park, playground, day care center, or other place where children regularly congregate**, must conduct a search of that person's name or other identifying information against the registration information regarding sexual predators and sexual offenders maintained by the Department of Law Enforcement under s. [943.043](#). The agency or governmental subdivision may conduct the search using the Internet site maintained by the Department of Law Enforcement. This section does not apply to those positions or appointments within a state agency or governmental subdivision for which a state and national criminal history background check is conducted.

Cogent Contract

- Ends 2014
- State approved vendor
- District options
- Certification requirements



Alerts and Renewals



New Resource



Welcome to E-PPS

Windows Internet Explorer


http://myfloridateacher.com/ePPS/Login.aspx?ReturnUrl=%2fpepps%2fDefault.aspx

Search Share More

Sign In Convert Select

PPS Login

**Professional Practices Services
Electronic Filing**



The Great Seal of the State of Florida is an oval emblem. It features a central scene with a woman in a blue dress holding a basket of flowers, standing on a path. In the background, there is a palm tree, a ship on the water, and a landscape with hills. The seal is surrounded by a yellow border with the text "GREAT SEAL OF THE STATE OF FLORIDA" at the top and "IN GOD WE TRUST" at the bottom, separated by two stars.

Email:

Password:

[Forgotten password? Enter your email address and click here.](#)

Login

PPS Electronic Filing System

- www.myfloridateacher.com/epps
- Enter DOE Number
- Enter Profile Data
- Enter Allegation Information
- Enter Employment Information
- Upload pdf files



PPS Electronic Filing System

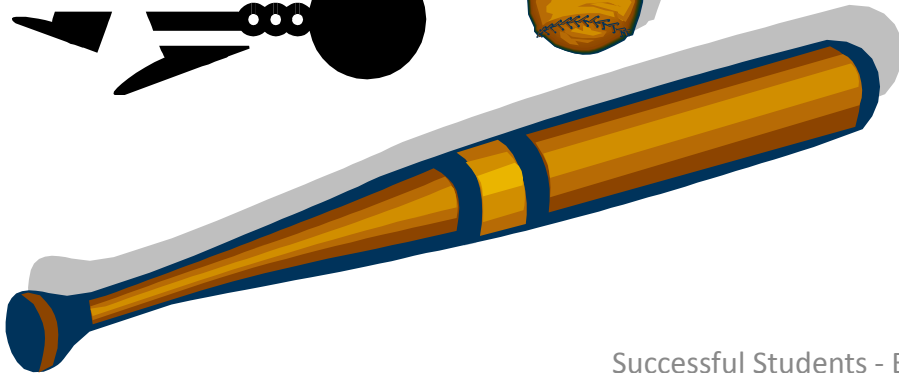
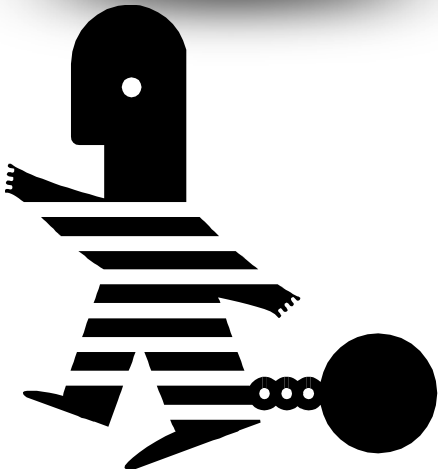
- Electronic confirmation
- View active cases
- Submit additional documentation



Sign Up → Provide PPS

- Email: daniel.halladay@fldoe.org
 - First and Last Name
 - District
 - Title
 - Address
 - Telephone and Fax
 - Email address

Carry your toolkit with you



Professional Practices Services

www.myfloridateacher.com

Florida Department of Education
325 West Gaines Street, Suite 224-E
Tallahassee, Florida 32399-0400
850.245.0438